



Дәріс-3. Айнымалы ток тізбегі.

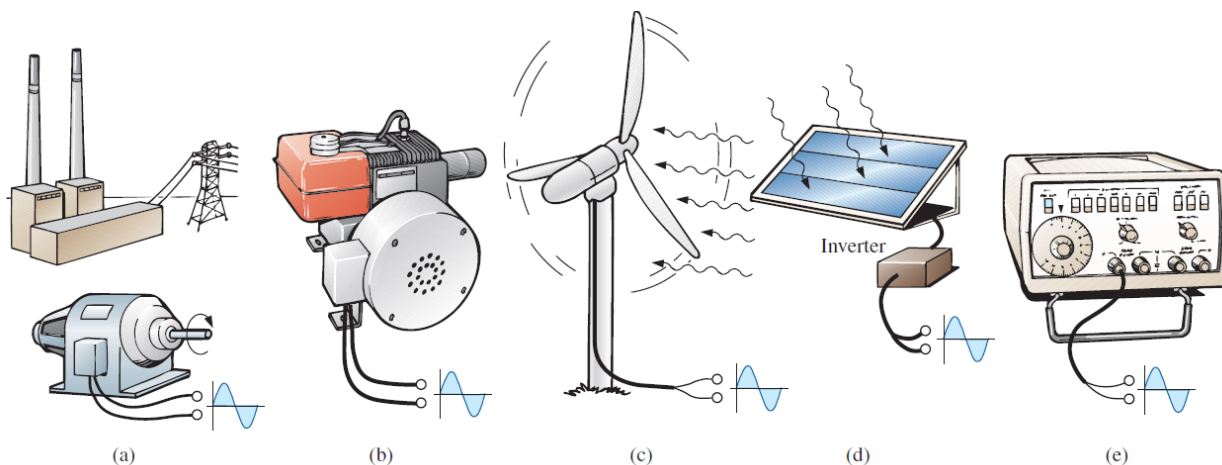
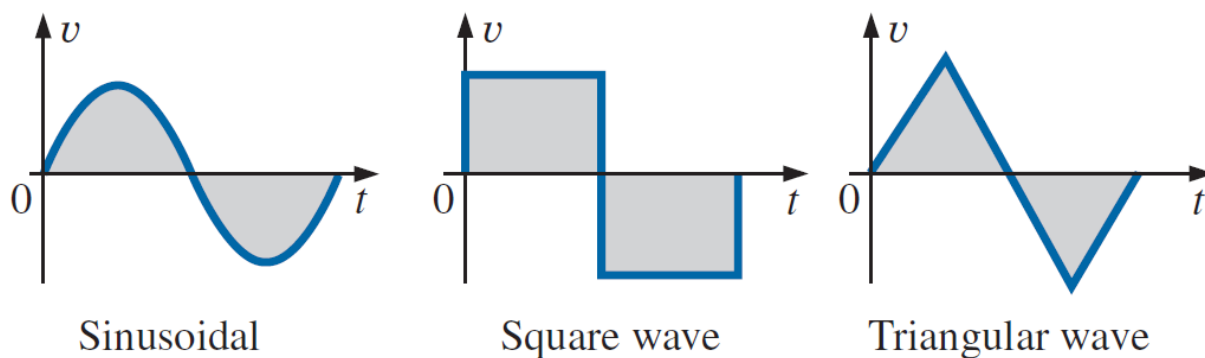


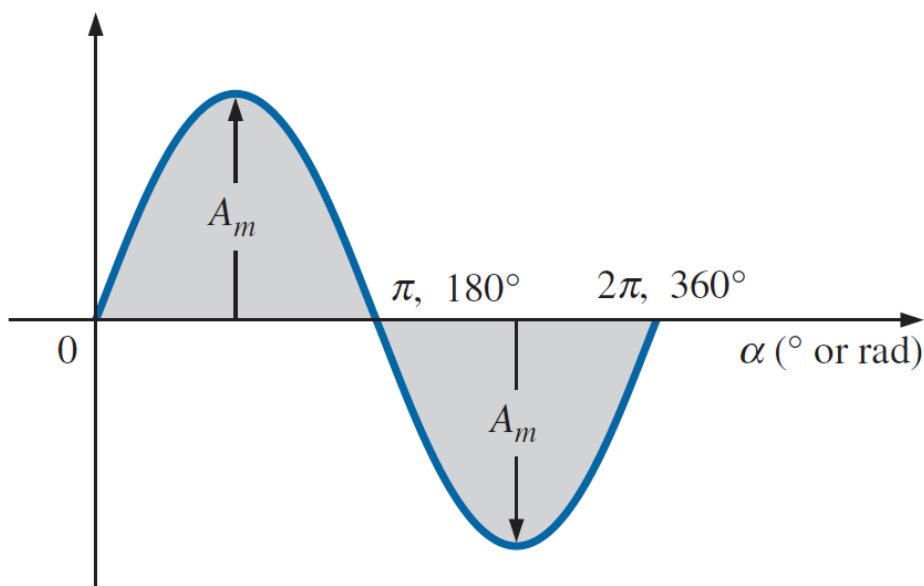
FIG. 13.2  
Various sources of ac power: (a) generating plant; (b) portable ac generator; (c) wind-power station; (d) solar panel; (e) function generator.

$$e = N \frac{d\phi}{dt}$$

Фарадей заңы бойынша айнымалы магнит өрісінен орамдарда туындайтын кернеу

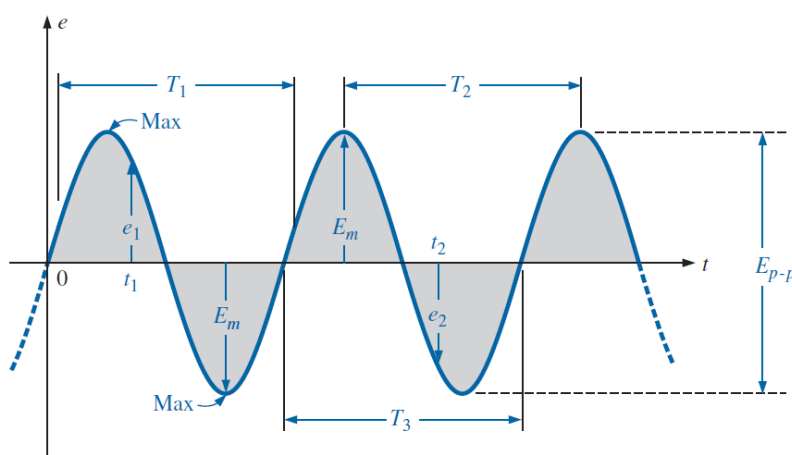
Функционалды генератордың айнымалы сигналдары:





$$i = I_m \sin \omega t$$

$$e = E_m \sin \omega t$$

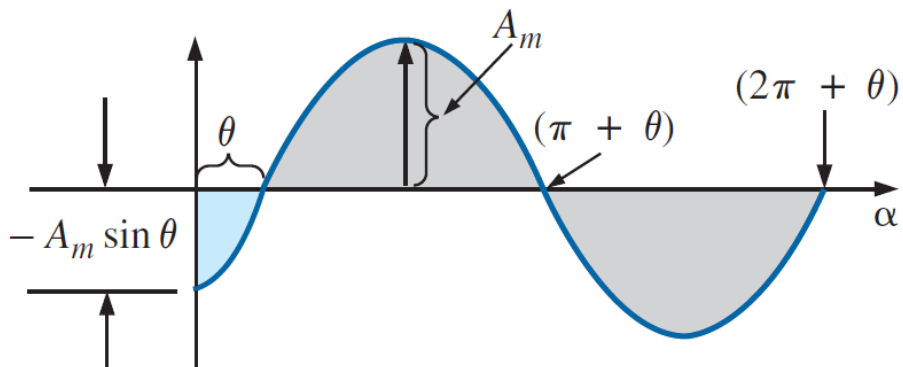
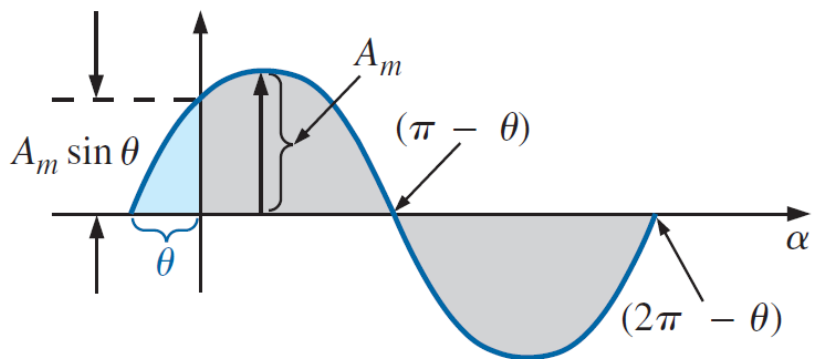


$$\omega = \frac{2\pi}{T}$$



$$I_{\text{rms}} = \frac{1}{\sqrt{2}} I_m = 0.707 I_m$$

$$E_{\text{rms}} = \frac{1}{\sqrt{2}} E_m = 0.707 E_m$$



$$A_m \sin(\omega t \pm \theta)$$

